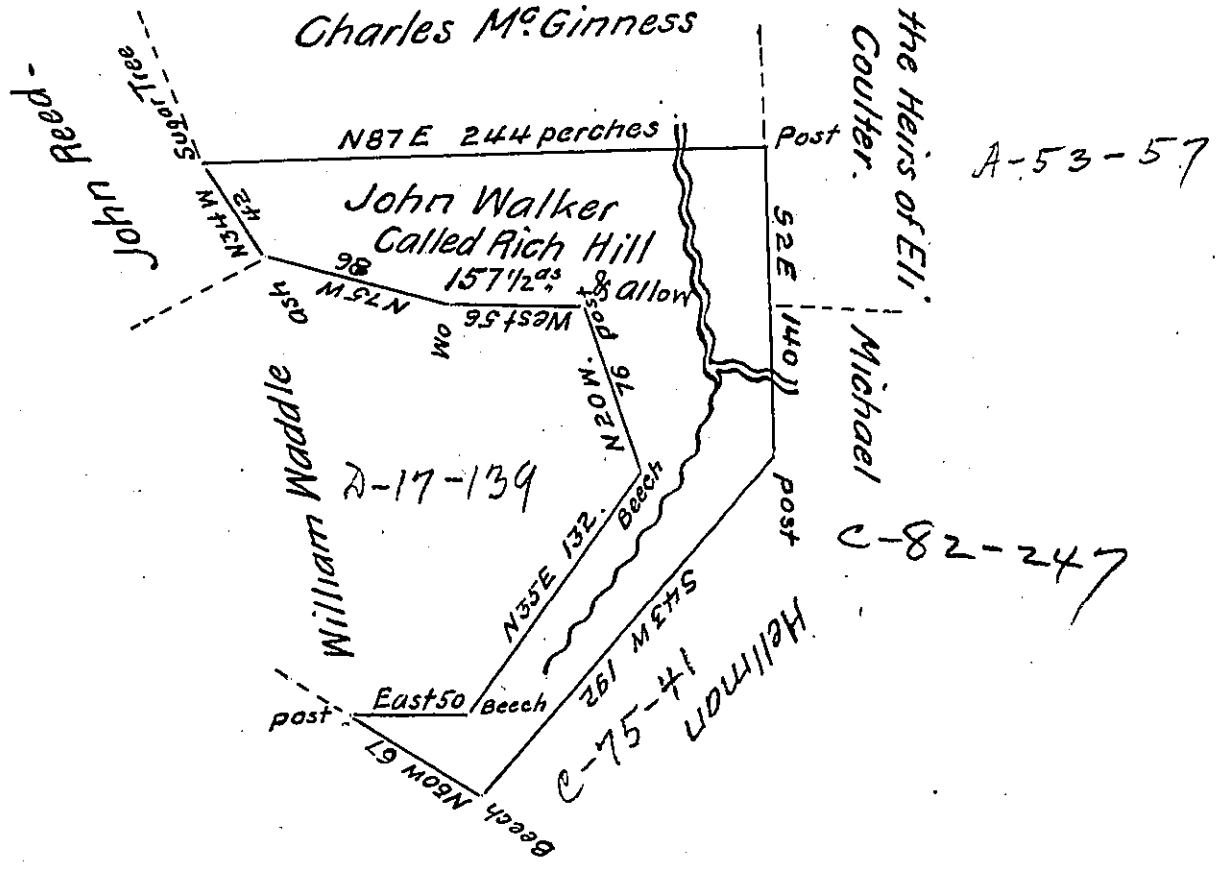


M-416



Situate on a Branch of Turtle Creek in Virsales Township in the  
 County of Alleghany and Surveyed the 1<sup>st</sup> day July 1795 In pursuance of a  
 Warrant Bearing date December the 27<sup>th</sup> 1794

To Daniel Brodhead Esq.  
 Surveyor General.

Benj Lodge D.S.

IN TESTIMONY that the above is a copy of the original remaining on file in  
 the Department of Internal Affairs of Pennsylvania, made  
 conformably to an Act of Assembly approved the 16th day of  
 February 1833, I have hereunto set my hand and caused  
 the Seal of said Department to be affixed at Harrisburg,  
 this thirty-first day of May 1907

*Henry Howell*  
 Secretary of Internal Affairs.